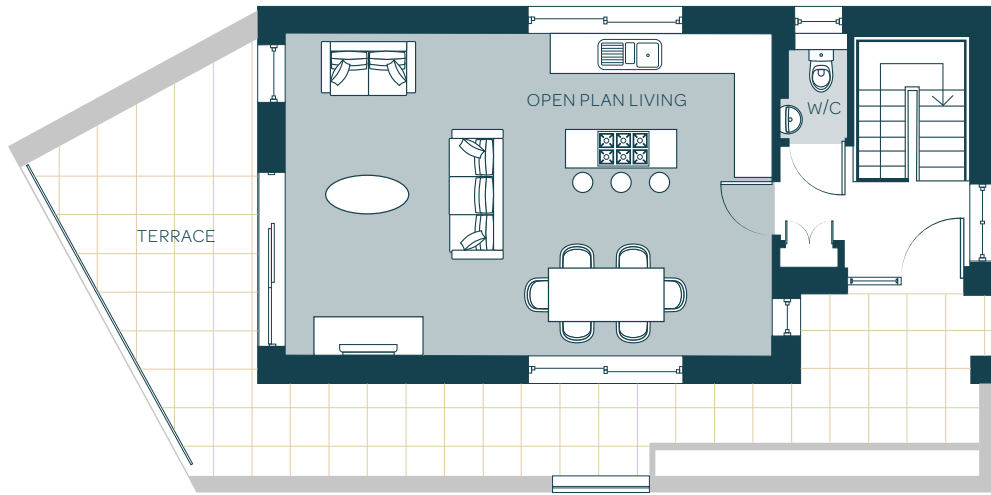
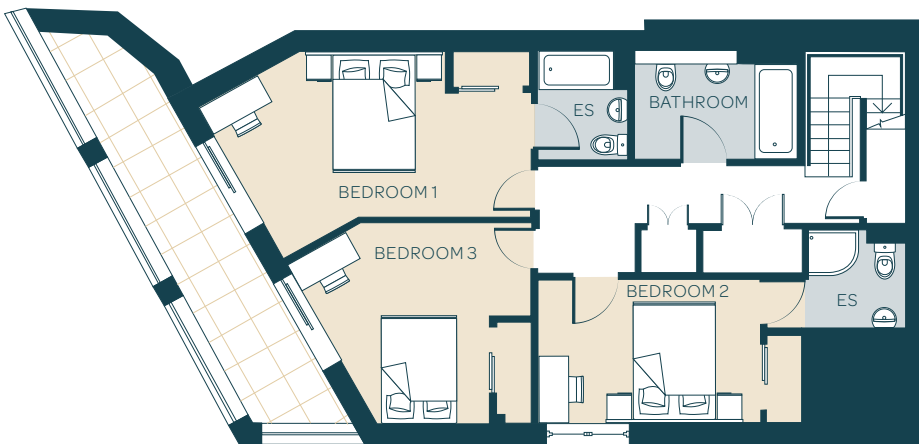




HOUSE TYPE 1



UPPER FLOOR



LOWER GROUND FLOOR

DIMENSIONS

UPPER FLOOR

Open Plan Living	7585mm X 5000mm
W/C	1040mm x 1620mm

LOWER GROUND FLOOR

Bedroom 1	5451mm X 3183mm (MAX)
En Suite	1630mm x 1940mm
Bedroom 2	4030mm x 2600mm
En Suite	1750mm x 1765mm
Bedroom 3	4081mm x 3329mm (MAX)
Bathroom	2970mm x 1940mm

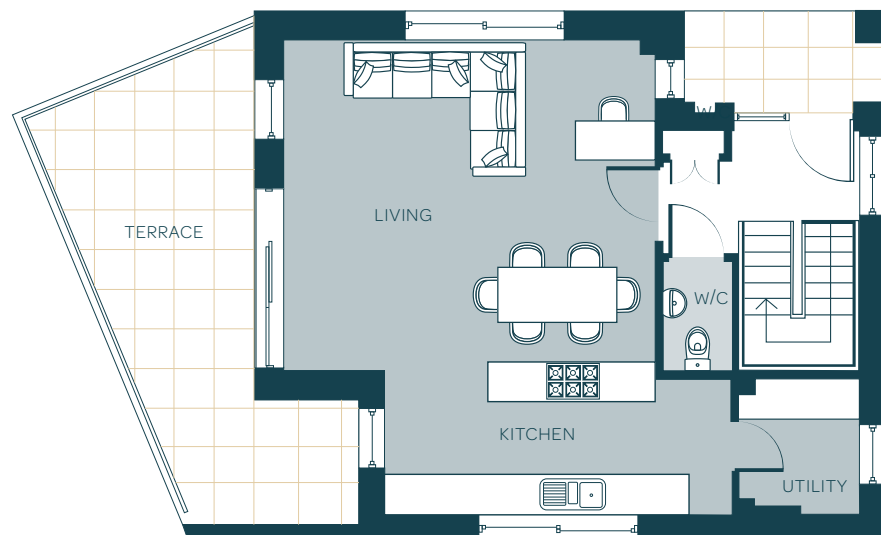


BASEMENT - BOAT STORE

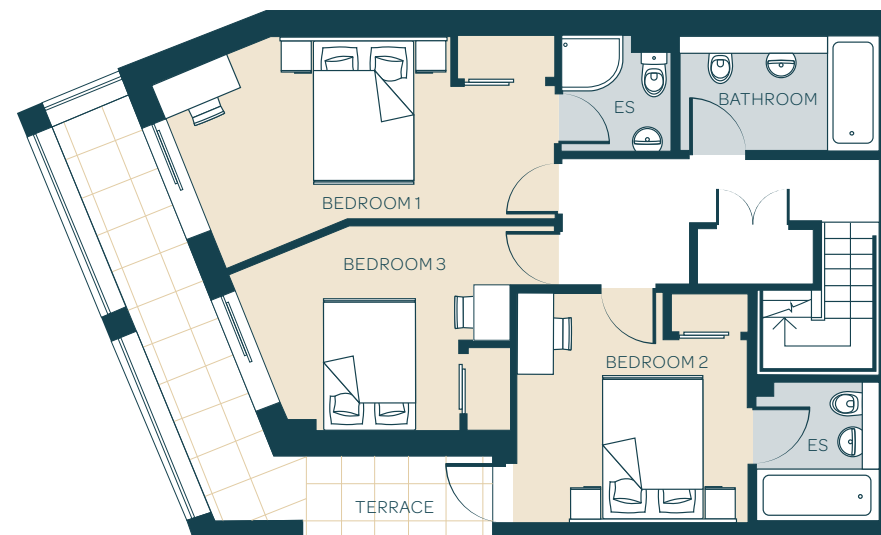
6953mm x 1288mm (MAX)



HOUSE TYPE 2



UPPER FLOOR



LOWER GROUND FLOOR

UPPER FLOOR

Living	5625mm X 5000mm
Kitchen	5245mm X 2300mm
Utility	1815mm x 2050mm
W/C	1025mm x 1650mm

LOWER GROUND FLOOR

Bedroom 1	5526mm X 2003mm (MAX)
En Suite	1625mm x 1695mm
Bedroom 2	3415mm x 3375mm
En Suite	1810mm x 2050mm
Bedroom 3	3933mm x 2491mm (MAX)
Bathroom	2950mm x 1695mm



APARTMENTS 1&2



WATERS EDGE

Contemporary living in Falmouth



APARTMENT 1

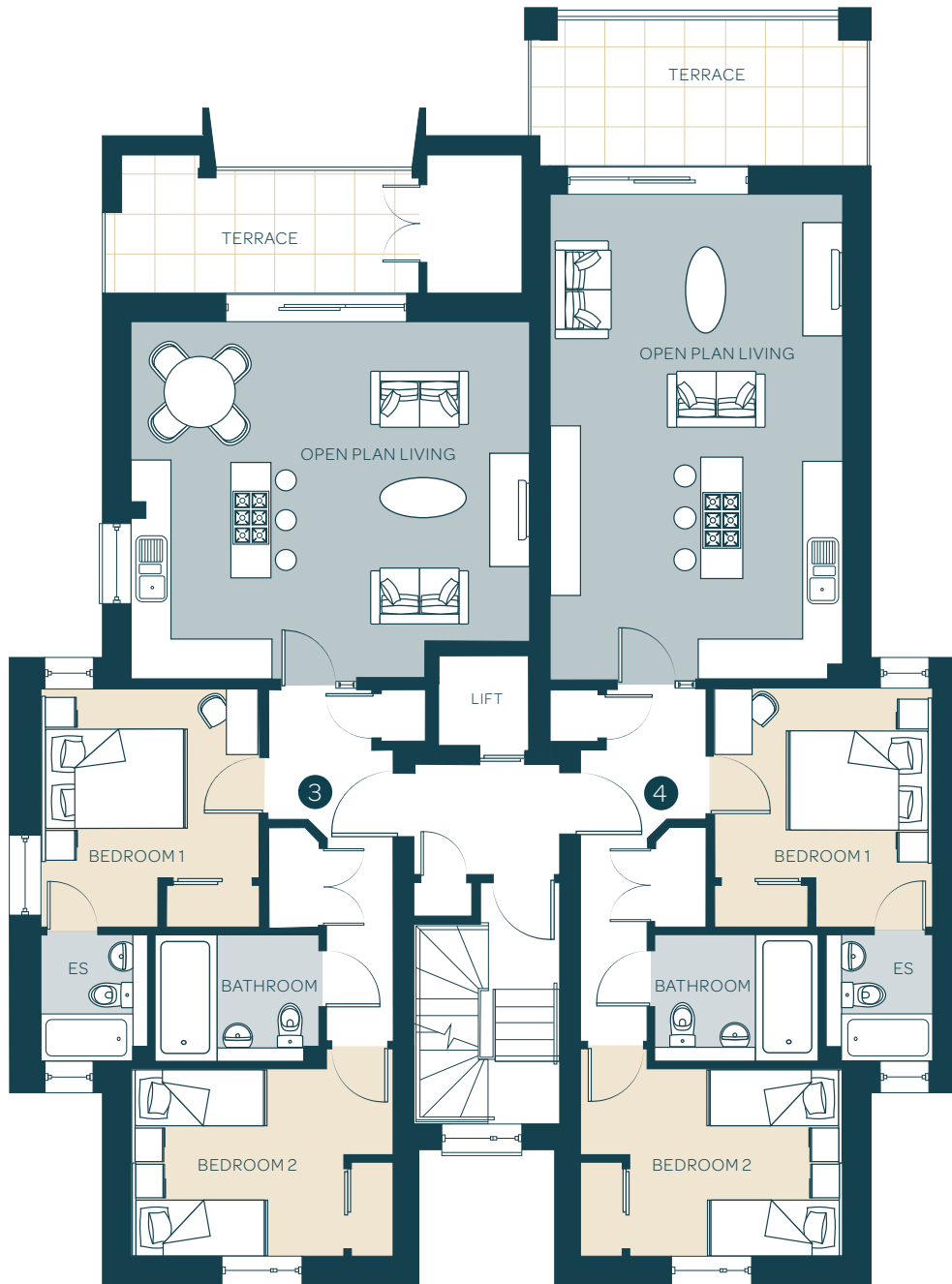
Open Plan Living	5985mm x 5365mm
Bedroom 1	3285mm x 3570mm
En Suite	1600mm x 1900mm
Bedroom 2	3935mm x 2810mm
Bathroom	2455mm x 1900mm
Terrace	4460mm x 2075mm (MAX)

APARTMENT 2

Open Plan Living	4385mm x 7275mm
Bedroom 1	3285mm x 3570mm
En Suite	1600mm x 1900mm
Bedroom 2	3935mm x 2810mm
Bathroom	2455mm x 1900mm
Terrace	7055mm x 4930mm (MAX)



APARTMENTS 3&4



APARTMENT 3

Open Plan Living	5985mm x 5365mm
Bedroom 1	3285mm x 3570mm
En Suite	1600mm x 1900mm
Bedroom 2	3935mm x 2810mm
Bathroom	2455mm x 1900mm
Terrace	4460mm x 2075mm (MAX)

APARTMENT 4

Open Plan Living	4385mm x 7275mm
Bedroom 1	3285mm x 3570mm
En Suite	1600mm x 1900mm
Bedroom 2	3935mm x 2810mm
Bathroom	2455mm x 1900mm
Terrace	5160mm x 1885mm (MAX)

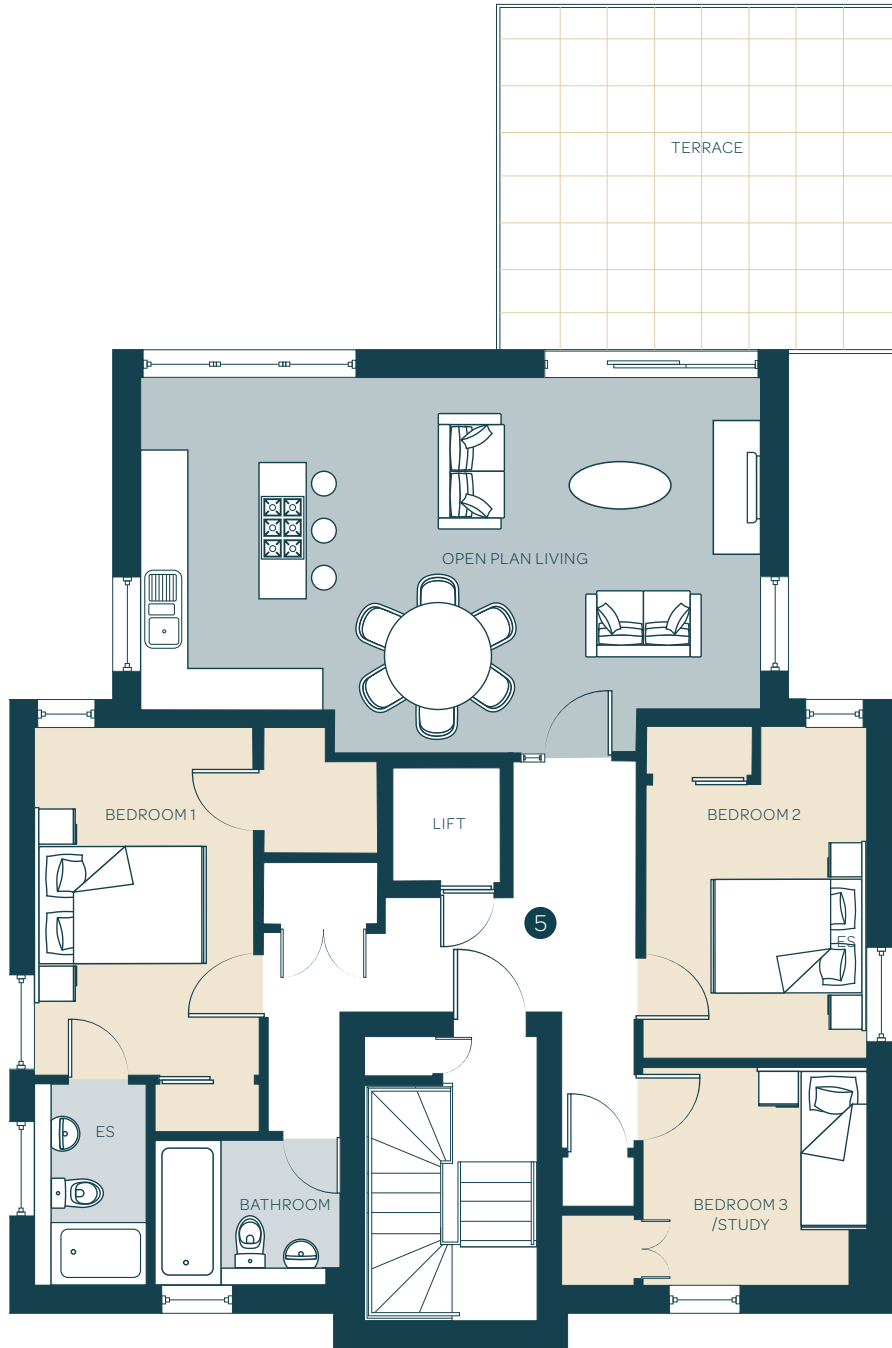


THE PENTHOUSE



WATERS EDGE

Contemporary living in Falmouth



THE PENTHOUSE

Open Plan Living	7875mm x 4735mm (MAX)
Bedroom 1	2810mm x 4420mm
En Suite	1420mm x 2555mm
Bedroom 2	2845mm x 4210mm
Bedroom 3	2845mm x 2770mm
Bathroom	2340mm x 1845mm
Terrace	5100mm x 4350mm